



## **Valley Green, Hemel Hempstead, HP2 7RQ**

### **Per month £1,000 Per month**

A well presented, first floor apartment situated in this popular position on Woodall Farm. Accommodation includes an entrance hallway, SPACIOUS living room, kitchen, bedroom with fitted wardrobe and bathroom with white suite. Externally the property further benefits from a communal parking area. Available January 2026. Partly furnished.



Sears & Co

[www.searsandco.co.uk](http://www.searsandco.co.uk) call: 01442 254 100



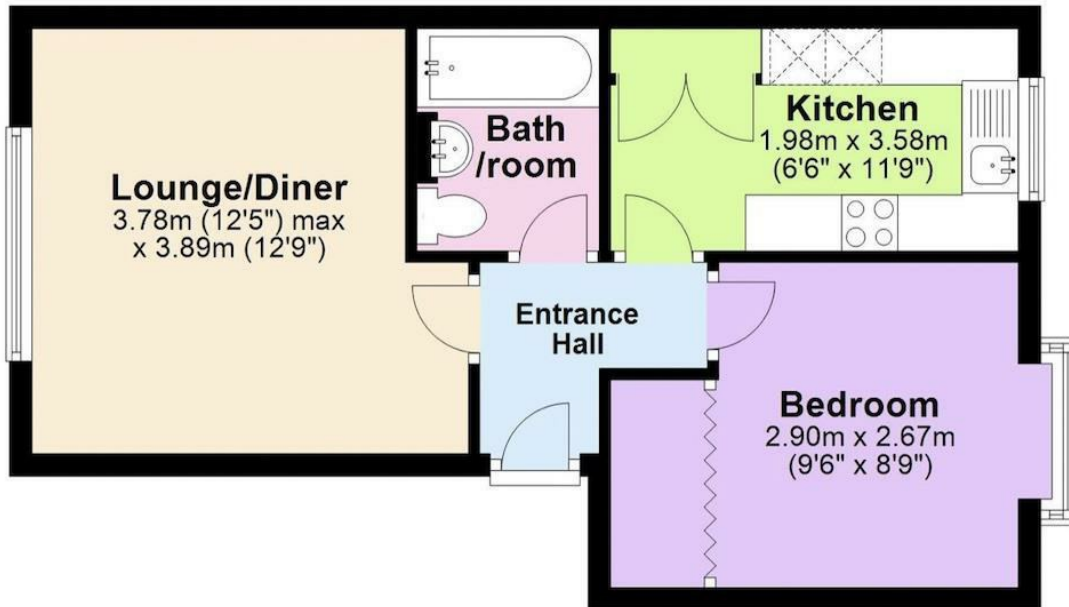
Sears & Co

[www.searsandco.co.uk](http://www.searsandco.co.uk) call: 01442 254 100



## First Floor

Approx. 36.3 sq. metres (391.2 sq. feet)



Total area: approx. 36.3 sq. metres (391.2 sq. feet)

This floorplan is not to scale. It's for guidance only and accuracy is not guaranteed.  
Plan produced using PlanUp.

Score	Energy rating	Current	Potential
92+	A		
81-91	B		82   B
69-80	C		
55-68	D	68   D	
39-54	E		
21-38	F		
1-20	G		

The Agent has not tested any apparatus, equipment, fixtures and fittings or services and so cannot verify that they are in working order or fit for the purpose. A Buyer is advised to obtain verification from their Solicitor or Surveyor. References to the Tenure of a Property are based on information supplied by the Seller. The Agent has not had sight of the title documents. A Buyer is advised to obtain verification from their Solicitor.

Items shown in photographs are NOT included unless specifically mentioned within the sales particulars. They may however be available by separate negotiation.

Buyers must check the availability of any property and make an appointment to view before embarking on any journey to see a property.

For further information see the Property Misdescriptions Act.

[www.searsandco.co.uk](http://www.searsandco.co.uk)

**Sears & Co**

Hemel Hempstead Office: 67 High Street, Old Town, Hemel Hempstead, Hertfordshire, HP1 3AF

call: 01442 254 100